

POWER LINE CHOKE

(DRUM CORE STYLE)

Electrical Specifications at 25°C

Parameter	Min.	Typ.	Max.	Units
Inductance	1360	1700	2040	μH
I_{MAX}^1		7.6		A
DCR		148		mΩ
Lead Diameter		.050 (1.27)		inches (mm)

Applications

Power Amplifiers

Filters Power Supplies

SCR and Triac Controls

Speaker Crossover Networks

RFI Suppression

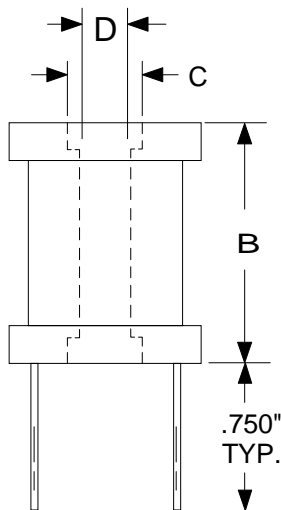
Operating temperature Range
-45°C to +85°C

Test Conditions:

Inductance tested at 100 mV_{RMS} and 1 kHz

1. Current for 10% drop in Inductance

PHYSICAL DIMENSIONS All dimensions in inches

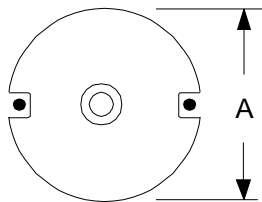


Dim.	inches
A	0.560
B	0.810
C	0.187
D	0.126

High Saturation

Pre-Tinned Leads

Center hole for mechanical mounting



Leads are .050 (#16 AWG)

Leads tinned to within 1/8" of body.

RHOMBUS P/N: L-12597

CUST P/N:

NAME:

DATE: 1/21/99

SHEET: